



**BRISBANE  
POWERHOUSE**



BRISBANE POWERHOUSE

# EVENTS HIRE GUIDE

A DISTINCT LANDMARK – BOTH AS A STRIKING PRE-WAR INDUSTRIAL BUILDING AND A HUB FOR CREATIVITY, ART AND CULTURAL INNOVATION – BRISBANE POWERHOUSE IS SITUATED ON THE BRISBANE RIVER, AND CENTRAL TO THE BUSTLING NEW FARM PARK PRECINCT.

As Brisbane City Council's premier arts venue, the much-loved building stages more than 1250 performances a year, including a program of festivals and visual arts exhibitions year round. In addition to its artistic endeavours, Brisbane Powerhouse delivers hundreds of events and functions: meetings, workshops, weddings and product launches, as well as large events such as multi day conferences and award ceremonies. The venue is also home to riverside bars and restaurants, situated amongst the heritage-listed graffiti, and, of course, the stories of all who have ventured, laughed and shared memories within its living walls.

Brisbane Powerhouse features two main stage theatres and three additional performance venues, varied corporate and private event facilities, gallery spaces, two restaurants and bars and one of the best river views in Brisbane.

We help create events and experiences that couldn't exist anywhere else and our building is the hero of our story, and its uniqueness is represented in everything our audience encounters.

# A DISTINCT LANDMARK



## ACKNOWLEDGEMENT OF COUNTRY

We acknowledge the Jagera/Turrbal peoples, the First Nation Traditional Owners of the land on which we gather. We pay respects to all Elders past and present and acknowledge the young leaders who are working beside our Elders in our cultural industries. We recognise all First Nation peoples as the original storytellers of these lands and acknowledge the important role they continue to play in our community.



#### ROOFTOP TERRACE

FLOOR SIZE 132m<sup>2</sup>

DECK 120m<sup>2</sup>

#### CAPACITY

THEATRE 100

BANQUET 80

COCKTAIL 150

CABARET 64

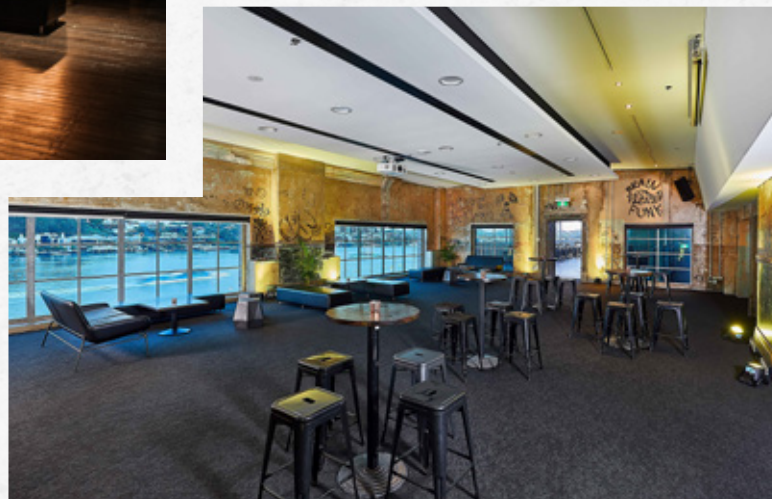
# ROOFTOP TERRACE

*OFFERS THE MOST STUNNING RIVER VIEWS IN BRISBANE. ONCE THE CONTROL ROOM FOR THE ORIGINAL POWERSTATION, THIS ONE OF A KIND VENUE BOASTS ABUNDANT HISTORY AND CHARACTER. WITH HERITAGE LISTED GRAFFITI WALLS AND LARGE BAY WINDOWS LOOKING OVER THE BRISBANE RIVER BELOW.*

The large main room is free from columns and offers a ceiling mounted, in-built projection screen to allow guests and audiences to capitalise on great sight lines. The main room leads to an exclusive outdoor undercover deck where you will find an array of lounge and cocktail furnishings.

This venue is the premier option for all event types, from banquet dinners and cocktail parties to seated keynote forums with stage and screens, or as an impeccable venue for collaborative workshops with ample space for breakout groups.

BRISBANE'S  
MOST STUNNING  
RIVER VIEWS



# RIVERBEND TERRACE



RIVERBEND TERRACE  
FLOOR SIZE 95m<sup>2</sup>

CAPACITY  
BANQUET 40  
COCKTAIL 80



*THE RIVERBEND TERRACE ON THE THIRD LEVEL ENCAPSULATES THE LAID-BACK AUSTRALIAN LIFESTYLE WE CRAVE AND APPRECIATE.*

A spacious covered deck with striking views of the Brisbane River, this outdoor space lends itself perfectly to VIP lunches or dinners, breakfast meetings, networking cocktail events and team building activities. Adjacent to the Rooftop Terrace, both venues can be hired together, giving you exclusive use of the top level at Brisbane Powerhouse.



# LAID-BACK AUSTRALIAN LIFESTYLE



# POWERHOUSE THEATRE

POWERHOUSE  
THEATRE

FLOOR SIZE 458m<sup>2</sup>

CAPACITY

THEATRE 288-710

COCKTAIL 500

BANQUET 300

w. dance floor

*OUR ICONIC CONTEMPORARY THEATRE IS ONE OF THE MOST SOUGHT AFTER EVENT SPACES IN BRISBANE. WITH A FLEXIBLE PERFORMANCE SPACE AND IMPRESSIVE IN-BUILT PRODUCTION FACILITIES, THE POWERHOUSE THEATRE IS IDEAL FOR LARGE SCALE EVENTS LIKE SEMINARS, GALA DINNERS, PRODUCT LAUNCHES AND TV COMMERCIALS.*

Featuring highly versatile capabilities, the Powerhouse Theatre boasts a fully retractable seating bank, revealing a flat floor space of 458m<sup>2</sup>. Showcasing some of the building's original graffiti mixed with an optional exposed brick backdrop for the stage, this space has all elements for a truly memorable experience.





VISY THEATRE  
FLOOR SIZE 29m<sup>2</sup>

CAPACITY  
THEATRE 112-200

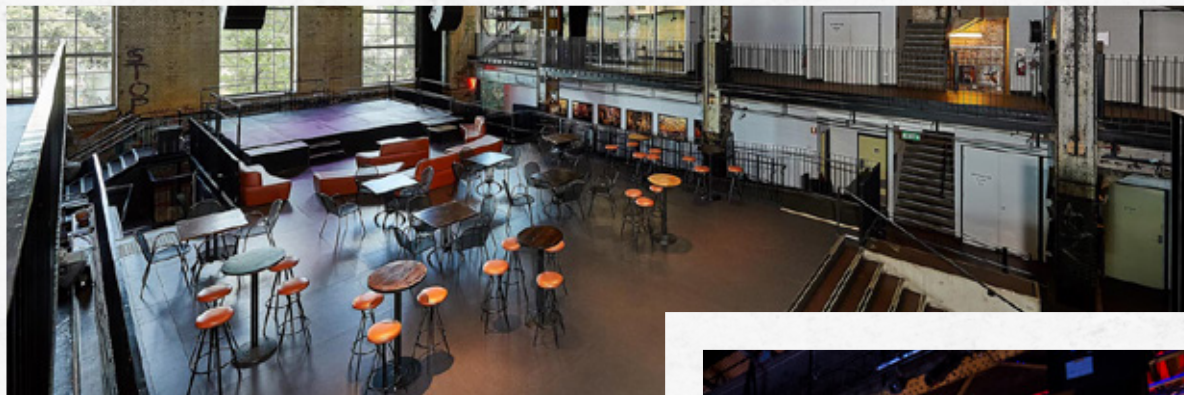
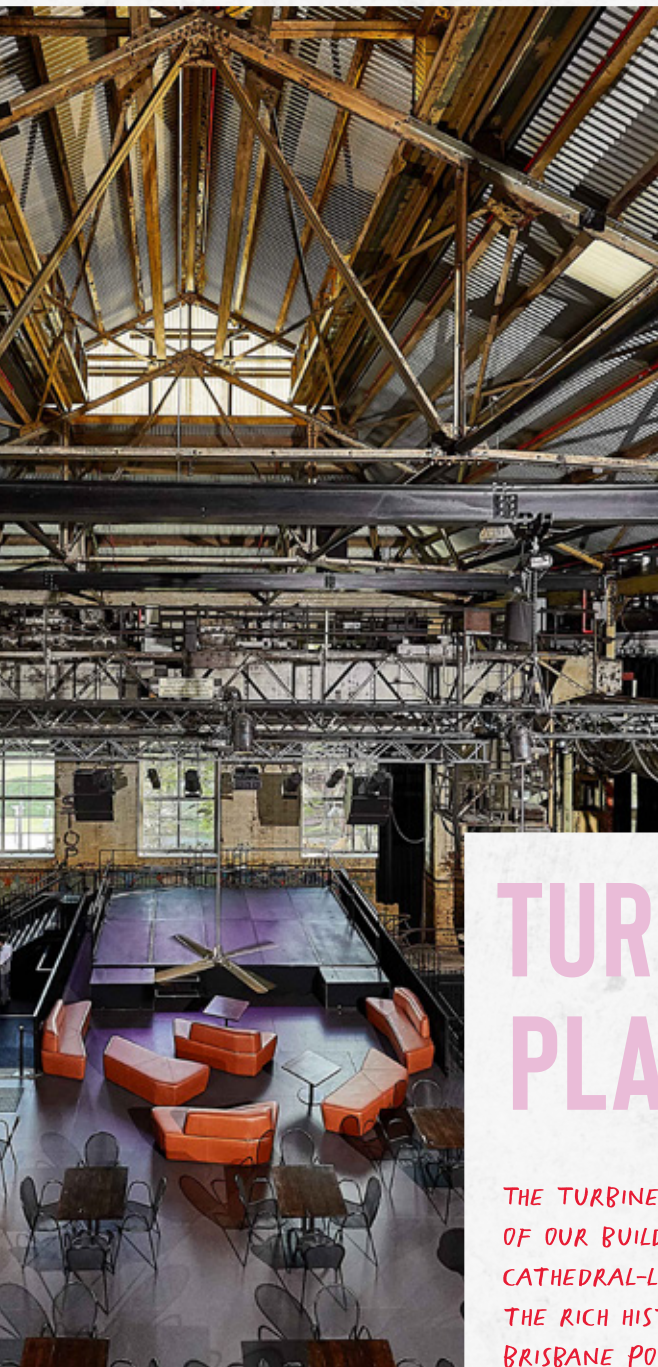


# VISY THEATRE

*THE VISY THEATRE IS AN INTIMATE THRUST-STAGE THEATRE FRAMED BY THE COLUMNS FROM THE ORIGINAL BUILDING. THE SPACE CREATES THE PERFECT ENVIRONMENT IN WHICH A CONNECTION BETWEEN SPEAKER AND AUDIENCE CAN BE FORMED EFFORTLESSLY.*

Providing a wide configuration over the standard deep layout, our Visy Theatre promotes engagement and a sense of intimacy whilst still offering a 200-seat capacity. Featuring impressive production facilities, back of house green rooms and the flexibility that comes with a theatrical space, the Visy Theatre is the perfect venue for TED Talk style events, pitch events, conferences, Q&A's and forums. A space full of possibilities and creative lustre, the Visy theatre will help ensure the message delivered will continue to resonate long after the event.

FULL OF  
POSSIBILITIES



**TURBINE  
PLATFORM**  
FLOOR SIZE 120m<sup>2</sup>  
incl stage

**CAPACITY**  
COCKTAIL 175  
THEATRE 150  
BANQUET 75

# TURBINE PLATFORM

*THE TURBINE PLATFORM IS AT THE CENTRE OF OUR BUILDING AND BOASTS A DRAMATIC, CATHEDRAL-LIKE SPACE THAT HIGHLIGHTS THE RICH HISTORY AND CHARACTER OF BRISBANE POWERHOUSE.*

The crane above the Turbine Platform has a working load of 40 tonnes; prior to the restoration, it was used to lift and replace the turbines from their mounting blocks when they needed repair. Now moved via remote control, the crane is used to transform this theatrical space with the help of cutting edge lighting and impressive in-built production facilities.

The Turbine Platform is a high impact space that moves beyond a conventional venue making it an ideal location for product launches, exhibitions, forums, Q&A's, cocktail parties and more. Abundant with colourful stories and atmospheric settings, the Turbine Platform is the perfect initial talking point for any event and encourages guest interaction whilst ensuring they remain relaxed and engaged.



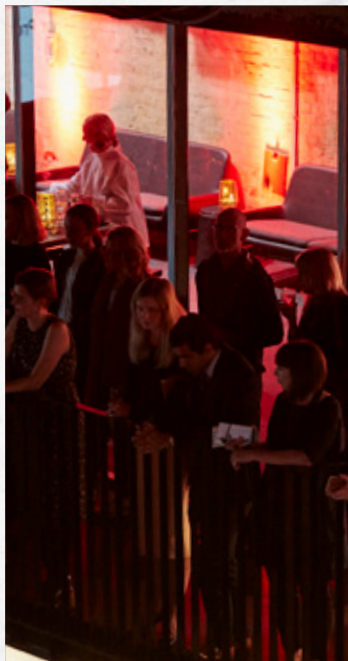
**PARK MEZZANINE**  
FLOOR SIZE 56m<sup>2</sup>

**CAPACITY**  
THEATRE 40  
COCKTAIL 40  
CLASSROOM 25  
BOARDROOM 25

# PARK MEZZANINE

*THE PARK MEZZANINE IS AN IDEAL VENUE FOR SMALLER MEETINGS, ALL WHILST SHOWCASING BEAUTIFUL VIEWS OF NEW FARM PARK WITH AN ABUNDANCE OF NATURAL LIGHT.*

It follows a more traditional setting and features floor-to-ceiling glass walls that overlook the Turbine Platform. Curtains also adorn the space to ensure privacy for your conference, meeting or workshop. An ideal option as a VIP space for events held on the Turbine Platform, the Park Mezzanine provides a familiar environment whilst encouraging out-of-the-box results.



**GRAFFITI ROOM**  
FLOOR SIZE 42m<sup>2</sup>

**CAPACITY**  
THEATRE 25  
COCKTAIL 25  
BOARDROOM 15

# GRAFFITI ROOM

*WITH ITS VIBRANT WALLS AND RIVER VIEWS, THE GRAFFITI ROOM OFFERS A TRULY UNIQUE VENUE FOR SMALL MEETINGS, CONFERENCES AND TRAINING SESSIONS FOR UP TO 25 GUESTS.*

A contemporary alternative to the standard boardroom, the Graffiti Room will inspire novel ideas and solutions for you and your team.

# MOMENTUM AND BUZZ



*SURROUNDED BY WILLOW TREES, THE PERFORMANCE LAWN'S SUPERB RIVER OUTLOOK IS THE PERFECT NATURAL SETTING FOR ANY OUTDOOR EVENT.*

PERFORMANCE LAWN  
FLOOR SIZE 750m<sup>2</sup>

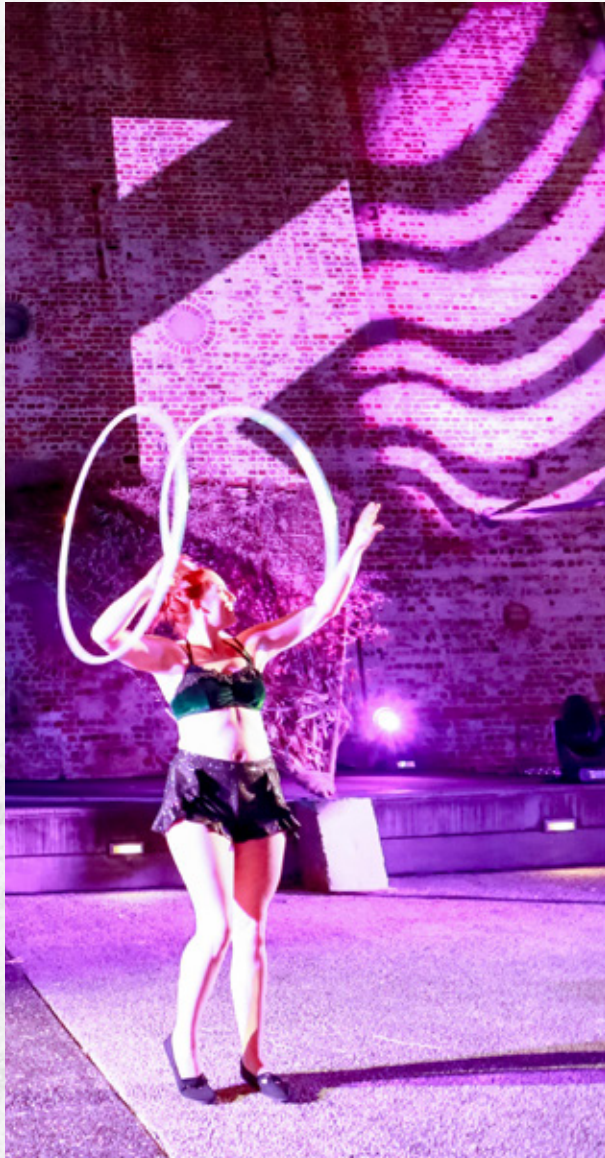
The 750m<sup>2</sup> flat piece of lawn lends itself effortlessly to a range of events making it a highly versatile space. Capable of facilitating large marquees, the lawn provides the platform for you to create a bespoke venue whilst making the most of the beautiful surroundings. Whether you are looking to host a corporate family fun day to help your staff engage and bond, or a venue for your next product launch which will create momentum and buzz, the Performance Lawn is the ideal space for your next outdoor event.



# PERFORMANCE LAWN



# POWERHOUSE PLAZA



POWERHOUSE PLAZA  
FLOOR SIZE 1320m<sup>2</sup>



THE POWERHOUSE PLAZA IS BRISBANE POWERHOUSE'S MAIN ENTRANCE AREA AND FAÇADE. WITH THE ICONIC AND BREATHTAKING BUILDING'S WALL CREATING A ONE-OF-A-KIND BACKDROP FOR YOUR EVENT.

Its open area is popular for product launches, outdoor festivals and markets, wedding ceremonies, and private events.

Please note that use of this space is subject to application. Please enquire with one of our friendly event managers for more information.

# WEDDINGS + CELEBRATIONS

*BRISBANE POWERHOUSE IS AN UNFORGETTABLE WEDDING VENUE WITH UNIQUE FLAIR AND CHARACTER.*

With a great selection of event spaces, ranging from an intimate ceremony overlooking the river, a cocktail party in our Rooftop Terrace or in a marquee on the lawn, we create exceptional experiences and treasured memories. We work with an enviable line-up of event suppliers, including our exclusive catering partner Wine & Dine'm, who was the ABIA 2018 winner of Queensland Independent Caterer and was recently announced as Australia's national events caterer of the year. Our friendly and highly skilled staff will ensure that your celebration at Brisbane Powerhouse is memorable and enjoyable, for you and your guests.



*CAT AND JAKE WERE MARRIED ON A PERFECT SPRING AFTERNOON WITH THEIR CLOSEST FRIENDS AND FAMILY OVERLOOKING THE BRISBANE RIVER AT THE CONTEMPORARY BRISBANE POWERHOUSE.*

Styled by White + White Weddings, Cat and Jake had a picturesque wedding with lush greenery and neutral tones that melded in with the historical building. Married under a dreamy arbour with stunning traditional roses and greenery by celebrant Carly Slade, the couple shared their intimate vows with friends and family. As their loved ones joined in their celebrations the explosions of white confetti filled the air welcoming the couple to their new adventure.

Friends and family moved to the nearby restaurant Mary Mae's Bar & Kitchen as the team at White + White and Brisbane Powerhouse went about setting the stunning reception. Complete with its own gin bar, the reception carried the theme of the ceremony with warm moody lighting, crisp neutral tones and lush greenery by Bouquet Boutique. As guests entered the room they headed to the outdoor deck for cocktail hour. With Kris Iwanuik and Simone Pope playing smooth Flamenco tunes, guests finished their custom-made gin cocktails and made their way to the dreamy dinner tables to welcome the newlyweds.

Cat and Jake danced their first dance as husband and wife to *Into My Arms* by Nick Cave that didn't leave a dry eye in the house. Inviting their loved ones to join, the party then danced the night away.

**PLANNING + STYLING** White + White Weddings & Events  
**VENUE** Riverbend Terrace (Ceremony ), Rooftop Terrace (Reception)  
**PHOTOGRAPHY** Luke Going Photography **VIDEOGRAPHY** La Lune Cinema  
**CELEBRANT** Carly Slad **FLORIST** Bouquet Boutique



# CORPORATE EVENTS

*BRISBANE POWERHOUSE OFFERS  
UNIQUE SPACES THAT BREAK AWAY FROM  
TRADITIONAL MEETING AND CONFERENCE  
SPACES TO ENSURE YOUR GUESTS HAVE  
A MEMORABLE EXPERIENCE WITH A  
LASTING IMPRESSION.*

We cater for all events including small boardroom meetings, large conferences and product launches. Coupled with our in-house production expertise and quality technical services, our friendly event staff will ensure that your conference or meeting runs smoothly and successfully.



# THE DESIGN CONFERENCE

*THE DESIGN CONFERENCE (TDC) HAS BEEN  
HELD AT BRISBANE POWERHOUSE FOR MORE  
THAN FIVE YEARS. WITH ITS 10TH YEAR IN  
OPERATION IN 2020.*

Over four days and evenings, TDC explores the future of the design industry and what it means to creatives in the community. Bringing together creative leaders from around the world and Australia, attendees have the opportunity to connect and learn from delegates and speakers in a series of activations, key notes, discussion panels, breakout workshops and networking opportunities. Aspiring designers are not forgotten, with TDC Futures aimed at introducing students to the world of commercial design. The TDC footprint in the venue includes the main stage of the Powerhouse Theatre, Turbine Platform, Rooftop Terrace and Graffiti Room.

# CATERING SERVICES

*BRISBANE POWERHOUSE IS DELIGHTED TO BE PARTNERED WITH OUR EXCLUSIVE CATERING SERVICES PROVIDER. WINE & DINE'M CATERING. WITH AN OUTSTANDING REPUTATION AND A TRACK RECORD THAT SPEAKS FOR ITSELF.*

Wine & Dine'm Catering commits to consistently delivering food that celebrates all that is fresh and contemporary. They are Brisbane's premiere catering service with over 20 years' experience delivering memorable events across South-East Queensland. In 2019 they were recognised as the National Events Caterer of the Year at the Savour Australia Restaurant and Catering Awards. From gala dinners to birthdays, corporate events to weddings; their expert team of international chefs, front-of-house staff and event managers continually push the boundaries to create the imaginable. Creative solutions are the spark that drives Wine & Dine'm Catering. Whether it's a grazing table, food stations, formal dining or cocktail parties – they bring colour, creativity and quality to every plate.

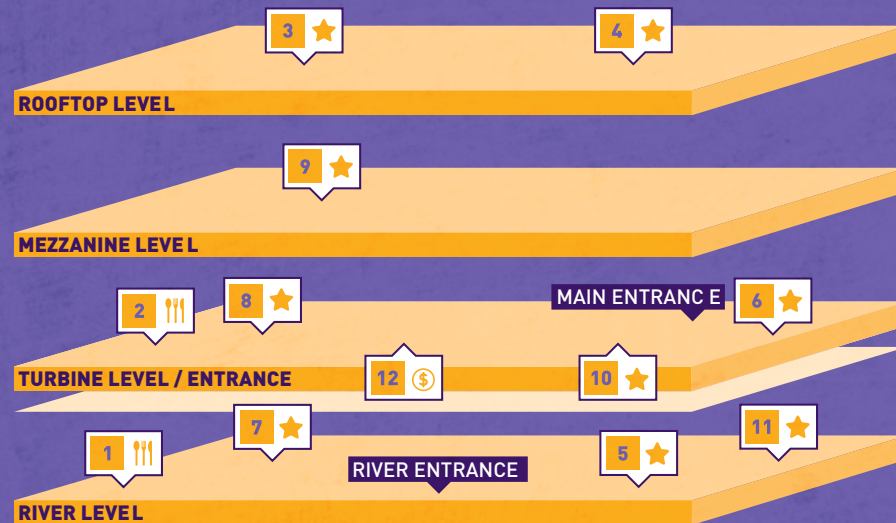


*"WE PRIDE OURSELVES ON BEING TRUSTED CATERERS. OUR CLIENTS CAN REST ASSURED KNOWING OUR CATERING AND SERVICE WILL SURPASS EXPECTATIONS EACH AND EVERY TIME. OUR LONGEVITY, FOOD CREATIVITY, DEDICATION TO STANDARDS AND SAFETY, TESTIMONIALS, AND CLIENT LIST ARE ALL TESTAMENTS TO THIS. WE TAKE GREAT DELIGHT IN KNOWING GUESTS LEAVE OUR FUNCTIONS TALKING POSITIVELY ABOUT THEIR FOOD EXPERIENCE."*

# VIRTUAL TOUR

Take a 360 walk-through of our different spaces for hire to really get a feel for each area and experience the venue. Click [here](#) to tour the venue.

## VENUE MAP



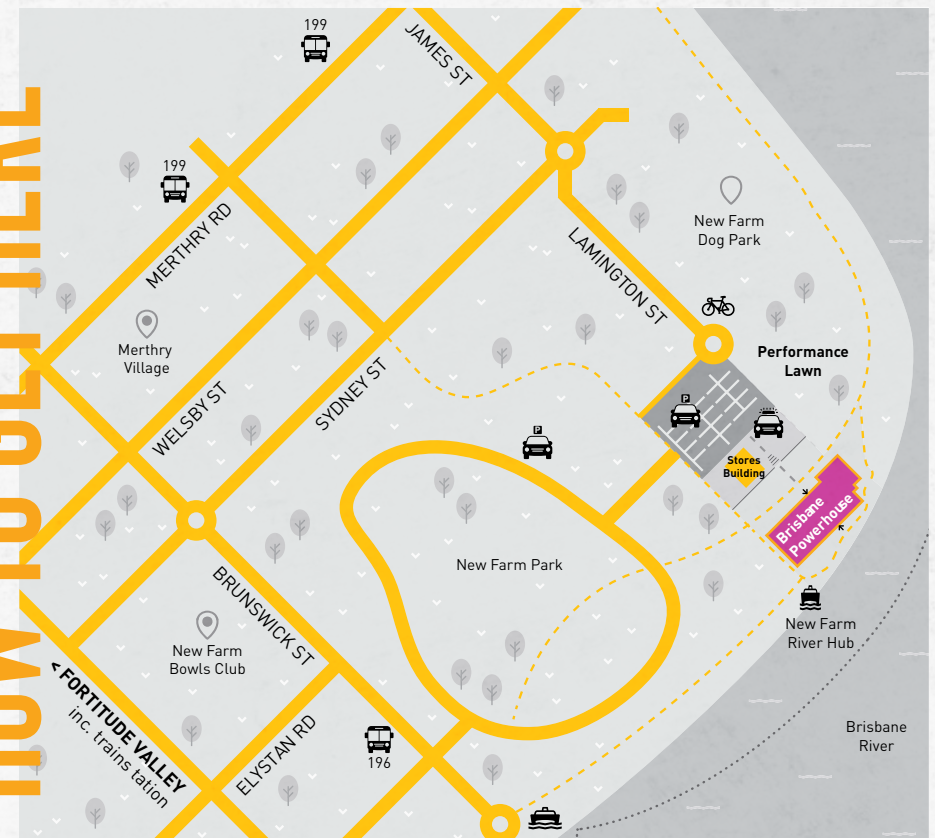
- |                                     |                               |                            |
|-------------------------------------|-------------------------------|----------------------------|
| <b>1</b> 🍴 Mary Mae's Kitchen + Bar | <b>5</b> ★ River Studio       | <b>9</b> ★ Park Mezzanine  |
| <b>2</b> 🍴 Bar Alto                 | <b>6</b> ★ Powerhouse Theatre | <b>10</b> ★ Graffiti Room  |
| <b>3</b> ★ Rooftop Terrace          | <b>7</b> ★ Visy Theatre       | <b>11</b> ★ Turbine Studio |
| <b>4</b> ★ Riverbend Terrace        | <b>8</b> ★ Turbine Platform   | <b>12</b> 💰 ATM            |

## CONTACT US

### EVENTS AT BRISBANE POWERHOUSE

119 LAMINGTON STREET, NEW FARM, QUEENSLAND, AUSTRALIA 4005  
T 617 3358 8622 | E [EVENTS@BRISBANEPowerhouse.org](mailto:EVENTS@BRISBANEPowerhouse.org)

## HOW TO GET HERE



**CITYCAT:** The New Farm Park CityCat jetty is a short 300m walk from Brisbane Powerhouse.

**BUS SERVICE:** The 195 and 196 bus services stop at the end of Brunswick Street at Oxlade Drive, on the East side of New Farm Park. The 199 bus stops at Merthy Road and Hawthorne Street. Both stops are a short walk away from Brisbane Powerhouse. For more information on public transit schedules and stop locations visit [translink.com.au](http://translink.com.au).

**PARKING:** Our carpark has over 100 free car parks. During busy times we open a one way link road that connects to New Farm Park carpark. We encourage you to arrive early to give yourself enough time to find a park.

**TAXI:** The taxi collect and drop off area is in the car park beside the Stores Building. Free taxi phones are located in the foyer opposite the box office.

**RIVER HUB:** The New Farm Park River Hub is located directly in front of Brisbane Powerhouse with easy vessel access for tour boats and recreational vessels.