

BRISBANE POWERHOUSE



ACCESS KEY

A customised accessibility guide

Updated June 2024 V1.0

119 Lamington Street
New Farm Queensland

Phone (07) 3358 8600



ACKNOWLEDGEMENT

Brisbane Powerhouse acknowledges the Jagera/Turrbal peoples, the First Nation Traditional Owners of the land on which our building is located. We pay respects to all Elders past and present and acknowledge the young leaders who are working beside our Elders in our cultural industries. We recognise all First Nations peoples as the original storytellers of these lands and acknowledge the important role they continue to play in our community.

CONTENTS

Guidelines	4	Brisbane Powerhouse, Level 2	32
Communication Board	5	Map	33
Did you know?	6	Park Mezzanine	34
Theatre Events Information	7	Gallery Spaces	35
Getting There	8	Toilets	36
Parking	9	Brisbane Powerhouse, Level 3	37
Welcome	10	Map	38
Staff	11	Rooftop Terrace	39
Ticketing	12	Riverbend Terrace	40
Brisbane Powerhouse, Ground Level	13	Gallery Space	41
Map	14	Stores Building	42
Foyers	15	Toilets	43
Underground Theatre	16	Multipurpose Studios	44
Fairfax Studio	17	Dressing Rooms	45
Mary Mae's Rest and Bar	18	Accessibility	46 and 47
Toilets	19	Safety	48 and 49
Brisbane Powerhouse, Level 1	20	Contact	50
Map	21		
Foyers	22		
Powerhouse Theatre	23 - 24		
Turbine Platform	25		
Graffiti Room	26		
Bar Alto	27		
Toilets	28		
Outdoor Area	29		
Plaza and Amphitheatre	30		
Pleasuredome	31		

GLOSSARY

Actively supervise - Parents and carers must have their children within eyesight at all times.

AFFL - Above finished floor level.

HSHH - Hand held shower hose.

TGSI - Tactile ground surface indicators. Tactile means using your touch to feel and understand things around you. Tactile ground surface indicators help people who have trouble seeing or who are unable to see things clearly. TGSI are often found on footpaths, stairs and train station platforms.

Communication Board - Helps people share information and ideas using pictures or symbols.

GUIDELINES

Thank you for choosing to use an Access Key for Brisbane Powerhouse. This customised accessibility guide provides convenient information about accessing this venue. Access Keys are universally designed and suitable for all people, regardless of ability.

For your Access Key to be successful, we recommend you follow these guidelines.

- Access Keys are available online to help you prepare for your visit in advance.
- Access Keys should be read and shared in an environment free of distractions.
- Access Keys can be read independently or shared with a friend, family member, carer or support worker to prepare for the visit.
- If sharing the Access Key with a participant, help the participant comprehend key points, consistently monitoring their level of understanding.
- If sharing the Access Key with a participant, contextualised photographs can be used to summarise information and experiences.
- If using the Access Key as a reflective tool, make sure to enjoy the pivotal link between experience and recall after the visit has taken place.
- Once the visit has taken place, revisit the Access Key to celebrate success.
- Accessibility information is located on pages [46](#) and [47](#).
- Safety information is located on pages [48](#) and [49](#).

Brisbane Powerhouse hereby acknowledges the support and assistance provided by [Access Ability Australia](#) in helping to prepare this Access Key.

We express our sincere appreciation to Access Ability Australia for their pivotal role in assisting Brisbane Powerhouse to highlight its commitment to accessibility and inclusion through this comprehensive guide. Their expertise and support have played a vital role in ensuring that Brisbane Powerhouse is welcoming to all individuals in our community.



COMMUNICATION BOARD

Brisbane Powerhouse

April 2024 V1



Accessible toilet



First aid



Hearing loop



How much?



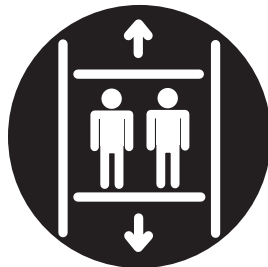
I don't speak English



I need help



Lifts



Cafe/Restaurant



Meeting rooms



No



Question



Quiet place



Rest area



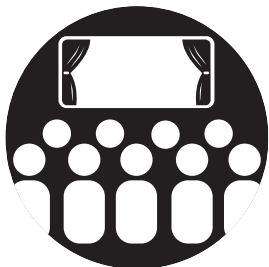
Room hire



Taxi



Theatre



Tickets



Time



Write it down



Yes



DID YOU KNOW?

Brisbane Powerhouse is proudly owned and supported by Brisbane City Council.

Brisbane City Council's Access and Inclusion Plan is available [online](#).

The Brisbane Powerhouse used to be a power station in the 1920's. It is now a four-level arts and **cultural** hub. Cultural means traditions, music, food and the way people do things.

Brisbane Powerhouse has a range of programs and events. Visit [What's On](#).

The venue has stage theatres and rooms that you can hire for private or business events and meetings.

The Powerhouse Store, located on level 1, has a range of handmade objects and useful design pieces available for sale from carefully chosen brands from around the world. Open every day. Extended hours for some shows.

The Brisbane Powerhouse is home to the Fairfax Studio and two restaurants; Bar Alto and Mary Mae's.

[Vertigo](#) is a vertical restaurant elevated 17m in the air on the outside wall of Brisbane Powerhouse. From early 2024 Vertigo will be available for people with mobility issues to experience. To find out more contact info@brisbanepowerhouse.org.

[Dendy Powerhouse](#) is a new permanent outdoor cinema under the stars equipped with high-quality over-ear audio headsets and comfortable armchairs. Audio description services are available through the headsets. The cinema is available for people with mobility issues.

Follow us on [YouTube](#), [Facebook](#), [Instagram](#) and [Twitter](#)

Have your say!
<https://brisbanepowerhouse.org/feedback/>



THEATRE EVENTS INFORMATION



Pre-Show

Beverages: Patrons are welcome to bring drinks in plastic cups into the theatres. However, food is not permitted.

Doors Opening: Theatre doors open approximately 30 minutes before events start and stay open until events begin.

Allocated Seating: Your allocated seating and entry door numbers are shown on your tickets.

Pre-Show Lighting: During pre-show admission, the house lights remain on, but not at full capacity. This lighting helps patrons locate their seats and navigate the theatre safely, both before the event starts and during intervals.

Usher Assistance: Ushers are stationed at the entry doors to assist with ticket checks,

provide directions and help patrons to seating as needed.

Seating Information: Seating rows have aisle lettering and each seat is numbered.

Performances

Performance Lighting: Blue lighting is present in the air lock entry areas of the theatres. Throughout performances, the lighting is dimmed down to create an enjoyable viewing experience. Some overhead lighting and LED strips on theatre stairs provide gentle light.

Usher Seating: Once patrons are seated, ushers have designated usher seats which are positioned to help quickly open exit doors in the event patrons need to leave the theatre during the show. Ushers may enter the theatre with torches during the performance.

Intervals: Some events may have one or more **intervals**, depending on the type of show and its length. An interval is a short break during an event.

Interval Procedures: If there is an interval, the house lights will be turned on and announcements may be made. During this time, patrons can choose to stay in the theatre or leave briefly.

Interval Duration: Intervals last around 30 minutes.

Interval Signal: A chime or bell will ring to signal the end of interval, accompanied by an announcement.

Encores: Certain events may include an **encore**. An encore is a short additional performance following the main event. During encores, the house lights remain off and will come back on at the end of the encore.

Exit Assistance: Staff are available to guide patrons to the exits, including those with mobility requirements, ensuring a safe and enjoyable theatre experience for all.



GETTING THERE

Brisbane Powerhouse is at 119 Lamington Street, New Farm.

See [Google Maps](#)

Bus

The nearest bus stop is on the corner of Brunswick Street and Oxlade Drive, 480 metres from the venue. Bus routes 196 and 199 will get you there.

Ferries

Ferries leave from Brisbane City, South Bank, West End and St Lucia every 15-30 minutes. The closest ferry terminal is at New Farm Park River Hub, in front of Brisbane Powerhouse, a 500-metre walk from the main entrance.

For more information on how to get to Brisbane Powerhouse via public transport, please visit [TransLink](#).

PARKING

Brisbane Council encourages the use of public transport.

There are:

- six accessible parking bays in the Brisbane Powerhouse carpark (Lamington Street entrance), 65 metres from the main entrance to Brisbane Powerhouse. Restrictions apply. There is a lift and stairs from the carpark
- 148 general parking spaces at Brisbane Powerhouse carpark, with restrictions
- overflow carparking on New Farm Park Ring Road (enter from Brunswick Street), including intermittent accessible parking bays
- a drop off zone at the roundabout at Lamington Street, before the entry into Brisbane Powerhouse carpark
- bike racks outside the Stores Building, near the Brisbane Powerhouse carpark.

There are bench seats with back and armrests near the Brisbane Powerhouse carpark.



WELCOME

Welcome to Brisbane Powerhouse.

This venue has a program of music, theatre, comedy, dance, film, visual arts, digital arts events and **in-conversation**. In-conversation is an event or show where people talk together.

There are two separate buildings on this site; Brisbane Powerhouse and Stores Building.

The Brisbane Powerhouse features:

- **Ground level** – foyers, Underground Theatre, Fairfax Studio (Gallery), Mary Mae's Restaurant and Bar and toilets
- **Level 1** – foyers, Powerhouse Store, Turbine Platform, Graffiti Room, Bar Alto and toilets
- **Outdoor event areas** – Plaza, the Amphitheatre and Pleasuredome
- **Level 2** – Park Mezzanine, gallery spaces for viewing events on lower levels and toilets
- **Level 3** – Rooftop Terrace, the Riverbend Terrace and gallery spaces for viewing events on lower levels.

The Stores Building is used as a rehearsal space and for multipurpose events.

There is a communication board at the Welcome Desk on level 1 to support customer communication.

For further information, visit our [website](#).



STAFF

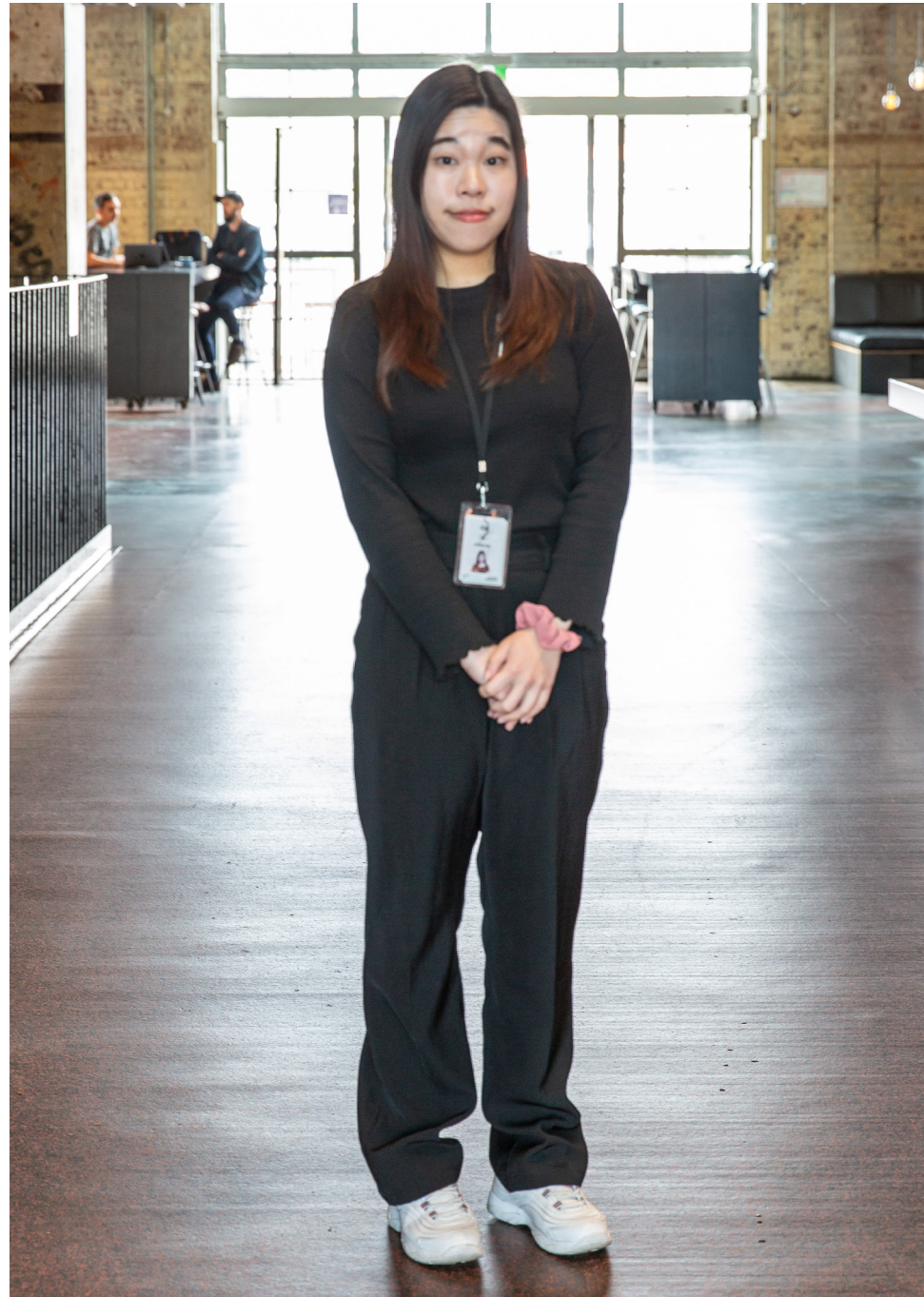
All staff, including **ushers** wear black clothing. Ushers help people find their seats, provide direction or answer questions.

Front of House staff and ushers also wear lanyards with a name tag and their photo on it.

For large events such as the Comedy Festival, Front of House staff and ushers will sometimes wear shirts with event logos.

Security staff wear a black shirt with logo.

Brisbane Powerhouse is staffed during opening hours.



TICKETING

There are several ways to buy tickets for shows and events at Brisbane Powerhouse.



ONLINE

1. Go to our [“What’s On”](#) page to find the performance or event you would like to attend.
2. Click on “Book”.
3. Click on “Find Tickets”.

If you need accessible seating, please call the Box Office at least 24 hours before your visit to make a reservation on (07) 3358 8600.

Companion Cards are accepted. Exceptions may apply. Please let us know if you would like to use a Companion Card at the time of booking. Companion Cards must be shown when collecting tickets.



PHONE

Call the Box Office on (07) 3358 8600.



BOX OFFICE

The Box Office is open Monday to Friday from 9am to 5pm and one hour before events. It is located on level 1 of the Brisbane Powerhouse, at the Welcome Desk.

EFTPOS accepted. No cash payments.

BRISBANE POWERHOUSE

Ground Level

Includes:

- foyers. A foyer is a open waiting area used by the public
- Underground Theatre
- Fairfax Studio
- Mary Mae's Restaurant and Bar
- toilets.

BRISBANE POWERHOUSE

GROUND LEVEL



FOYERS

Brisbane Powerhouse, **Ground Level**

There are two foyers on ground level.

Entry Foyer

The entry foyer is through the ground floor entry doors.

From this foyer you can access:

- Mary Mae's Restaurant and Bar
- toilets
- Underground Theatre foyer.

Underground Theatre Foyer

To access, pass through the Entry foyer.

Go through automatic sliding doors that have a 1980mm space for you to pass through.

Art displays are sometimes displayed in the Underground Theatre foyer.

From this foyer you can access:

- Underground Theatre
- lift and stairs to the upper levels
- Fairfax Studio
- backstage area.

This foyer includes:

- various seating options, some with backrests
- audio visual screens
- **track lighting.** Track lighting is adjustable lamps which can be mounted on an electrified metal rack.



Sensory Guide



Feel

Change in ground surface
(entry foyer)
Heating/Cooling
Shared personal space



Sounds

Announcements
Automated doors
Background music
Chimes or bell
Entertainment
Telephones



Sights

Crowd movement
Dim lights
On screen presentations



Smells

Food/Drink
Perfumes

UNDERGROUND THEATRE

Brisbane Powerhouse, **Ground Level**



Entry summary

There are two sets of doors with flat entry.

Set One

- Manual door. Pull to open
- Width 880mm to 1430mm.
- Leads to an air lock area with blue lighting

Set Two

- Manual door. Pull to open.
- Width 880mm to 1430mm.

The Underground Theatre is a performing stage surrounded by seating for up to 200 people.

Accessible seating is in Row A. Seats are removeable and can be adjusted for a wheelchair user and companion to sit together or for two wheelchair users.



Sensory Guide



Feel

Change in ground surface
Heating/Cooling
Shared Personal Space



Sounds

Applause
Music
Narrator/Performance
Retractable seats
Sound effects



Sights

Special effects smoke
Varied lighting
Visual effects
Vivid entertainment



Smells

Drinks
Perfumes
Special effects smoke

FAIRFAX STUDIO

Brisbane Powerhouse, **Ground Level**

Entry summary

- Manual door. Pull to open.
- Width 830mm to 1250mm.

The Fairfax Studio is a gallery that has a program of free contemporary art. This art may include painting, sculpture, photography, video, performance and more. All displayed at various heights.

Creative works that include sound, video and visual art are presented by local, national and international artists.

Some exhibitions and shows may include descriptive labels and audio descriptions. For more information please contact Brisbane Powerhouse.



Feel

Heating/Cooling
Shared Personal Space



Sounds

Echo
Footsteps



Sights

Movement of people
Varied lighting



Smells

Perfumes

Sensory Guide

MARY MAE'S RESTAURANT AND BAR

Brisbane Powerhouse, **Ground Level**

Entry summary

There are three entrances.

Entry One

- Location: from the terrace before the ground floor foyer entry doors, on the left.
- Manual door. Push to open.
- Width 1040mm.

Entry Two

- Location: from the ground floor entry foyer, on the left.
- Manual door. Pull out to open.
- Width 970mm.

Entry Three

- Location: from the terrace.
- Wide open entrance.

Mary Mae's Restaurant and Bar has riverbank views and an all-day dining menu.

Open Monday to Thursday from 8am to 3pm and Friday to Sunday from 8am to 10pm.

Includes:

- indoor dining area
- outdoor dining area on the Terrace
- square, rectangle, bar and bench tables
- bench seats, chairs and couches with backrests
- stools
- high chairs
- bar with serving counter at 1240mm AFFL
- meal collection counter at 980mm AFFL
- sun umbrellas on Terrace area.

Cash and EFTPOS are accepted.

Mary Mae's Restaurant and Bar is available for the hire of private events.

Signage will be available 24 hours in advance to inform visitors that the restaurant will be closed for private events.

For event enquiries, please see our [website](#).



Sensory Guide



Feel

Heating/Cooling
Shared personal space
Weather



Sounds

Aeroplanes
Announcements
Coffee machine
Fans
Music
Weather



Sights

Glare



Smells

Food/Drink
Perfumes

TOILETS

Brisbane Powerhouse, **Ground Level**

There is one set of toilets on ground level.

Location: off the entry foyer, on the right.

Includes:

- one all genders, accessible toilet with artificial lighting
- manual door that you push open with an 850mm space for you to pass through
- twist lock at 880mm AFFL
- cubicle space 1950mm x 4920mm
- grab bars to the right and beside toilet
- toilet height 460mm AFFL with right hand transfer
- sink height 830mm AFFL with lever tap 1050mm AFFL
- emergency buttons 200mm from toilet and beside sink.
- baby change area
- separate men/boys and women/girls' toilets.



Feel

Shared personal space
(excl accessible)



Sounds

Announcements
Hand dryer
Music
Toilet flushing
Water running



Sights

Bright lights
Mirror/Reflection



Smells

Air Freshener
Bathroom smells
Disinfectants

Sensory Guide

BRISBANE POWERHOUSE

Level 1

When you enter through the main entrance of the Brisbane Powerhouse, you will find yourself on level 1.

If entering the Brisbane Powerhouse from the ground level, there is a lift or stairs located in the Underground Theatre foyer.

Includes:

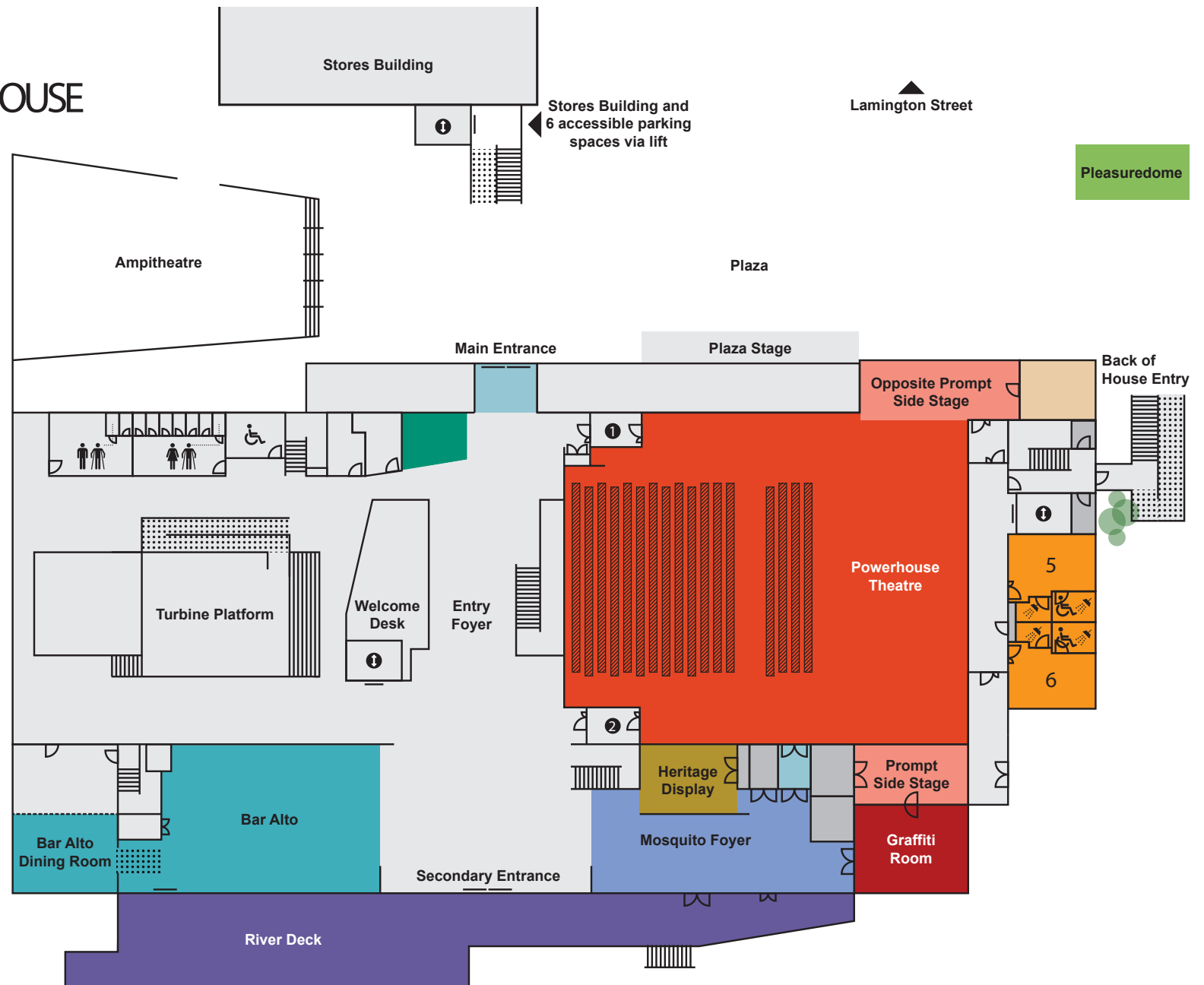
- entry foyer and Mosquito foyer
- Powerhouse Store
- Powerhouse Theatre (Doors 1 and 2)
- Turbine Platform
- Graffiti Room
- Bar Alto
- toilets.

BRISBANE POWERHOUSE

LEVEL 1

New Farm Park
Ring Road

- Pleasuredome
- Mosquito Foyer
- Heritage Display
- Powerhouse Store
- Lobby
- Powerhouse Theatre
- Dressing Room
- Graffiti Room
- River Deck
- Side Stage
- Loading Dock
- Storage
- Bar Alto
- Access Ramp
- i Lift
- Theatre Seating



FOYERS

Brisbane Powerhouse, **Level 1**

There are two foyers on level 1.

Entry Foyer

Location: through the main entry doors.

Includes access to:

- Welcome Desk/Box Office
- Doors 1 and 2 of Powerhouse Theatre
- Turbine Platform
- Powerhouse Store.

Mosquito Foyer (pictured)

The Mosquito Foyer is after the Welcome Desk, on the left.

Includes access to:

- Bar Alto
- Heritage Display, providing historical information on the Brisbane Powerhouse site
- Graffiti Room.

The Mosquito Foyer (named after the artwork on the surrounding wall) is a space for people to have a drink before an event.

It is also available for hire and can be booked together with the Graffiti Room.



Sensory Guide



Feel

Change in ground surface
Heating/Cooling
Shared personal space



Sounds

Announcements
Automated doors
Chimes or bells
Entertainment
Music from Bar Alto
Telephones



Sights

Crowd movement
Dim lighting
On screen presentations



Smells

Food/Drink
Perfumes

POWERHOUSE THEATRE

Brisbane Powerhouse, **Level 1**

Entry summary

There are 5 doors with flat entry. Doors are numbered.

Door 1

Location: level 1.

Set One

- Manual door. Pull to open.
- Width 780mm to 1300mm.
- Leads to an airlock.

Set Two

- Manual door. Pull to open.
- Width 780mm to 1300mm.
- Leads to lower floor and lower half of tiered seating.
- Accessible seating available.

Door 2

Location: level 1.

Set One

- Manual door. Pull to open.
- Width 870mm to 1210mm.
- Leads to an airlock.

Set Two

- Manual door. Pull to open.
- Width 870mm to 1210mm.
- Leads to lower floor and lower half of tiered seating.
- Accessible seating available.

Doors 3 and 4

Location: level 2.

Set One

- Manual doors. Pull to open.
- Width 790mm to 900mm.
- Leads to an airlock.

Set Two

- Manual doors. Pull to open.
- Width 790mm to 900mm.
- Leads to upper half of tiered section and the lower and upper gallery.
- Seats are retractable in tiered section.

Door 6

Location: level 3.

Set One

- Manual door. Pull to open.
- Width 880mm
- Leads to an airlock.

Set Two

- Manual doors. Pull to open.
- Width 830mm.
- leads to upper gallery and balcony sections of the theatre.
- Seats are retractable.



POWERHOUSE THEATRE

Brisbane Powerhouse, **Level 1**

The Powerhouse Theatre is spread across three levels; level 1 - 3.

Level 2 and 3 can be reached by lift or stairs.



Sensory Guide



Feel

Change in ground surface
Heating/Cooling
Shared personal space



Sounds

Applause
Music
Performance/Narrator
Retractable seats
Sound effects



Sights

Special effects smoke
Varied lighting
Visual effects
Vivid entertainment



Smells

Drink
Perfumes
Special effects smoke

TURBINE PLATFORM

Brisbane Powerhouse, Level 1

The Turbine Platform is a large open space that is available for hire and can be used in different ways for events such as exhibitions, product launches, forums, Q and A's and cocktail parties for up to 175 people.

It can be used for ticketed events. Large curtains can go around the Turbine Platform to block viewing during ticketed events and ushers may be present at the curtains to check tickets before entry. Barriers may also be used to direct visitors.

There is an accessible ramp and steps to the Turbine Platform.

Includes:

- a stage (depending on the type of event)
- a range of furniture options; including tables, seats with back and armrests and couches. There is room for wheelchair users to sit with friends.



Sensory Guide



Feel

Heating/Cooling
Shared personal space



Sounds

Applause
Music
Performance/Narrator
Sound effects



Sights

Special effects smoke
Varied lighting
Visual effects
Vivid entertainment



Smells

Food/Drink
Perfumes
Special effects smoke

GRAFFITI ROOM

Brisbane Powerhouse, **Level 1**

Entry is through a manual door which you pull out with an 890mm space for you to pass through. This can be opened to double doors with a 1760mm space for you to pass through.

The Graffiti Room is suitable for up to 25 people. It is available for hire and is perfect for small meetings, conferences, training sessions and as a breakout space for performers using the Powerhouse Theatre.

It is a space with walls that have strong bright colours and bold patterns as well as a view of the river.

Includes:

- long conference table
- seats with backrests
- audio visual screen
- fridge
- white boards

- remote controlled blinds
- access to the Prompt Side Stage of the Powerhouse Theatre. Entry is through double up doors. The first door you pull out and the second door you push open. Both doors have a 1000mm space for you to pass through.



Sensory Guide



Feel

Change in ground surface
Heating/Cooling
Shared personal space



Sounds

Heating/Cooling
Telephones



Sights

Contrasting colours (wall art)
Digital screens
Glare
People



Smells

Food/Drink
Perfumes

BAR ALTO

Brisbane Powerhouse, **Level 1**

There are two ways to enter Bar Alto.

You can enter the Brisbane Powerhouse through the main entrance on level 1. Bar Alto is directly after the Welcome Desk.

You can also enter from the river deck. Entry from the river deck is via exterior stairs and then through an automatic sliding door with a 1030mm space for you to pass through.

Bar Alto is a bar and restaurant. It is split across two levels. There is a small internal ramp that takes you from the bar area into the upper level of the restaurant.

It is a popular place to eat or have a drink before or after an event at Brisbane Powerhouse.
<http://www.baralto.com.au/>

Please see our website or call the restaurant on (07) 3358 1063.
<http://www.baralto.com.au/>

Bar Alto includes:

- bar
- restaurant
- outdoor eating on the river deck
- bar stools with backrests
- bar tables, rectangle dining tables and coffee tables
- couches and seats with backrests
- highchairs
- bar with serving counter at 1140mm AFFL.

Cash and EFTPOS are accepted.

Bar Alto may occasionally be closed for private events.

Bar opening hours:

- Tuesdays 9:30am to 5pm
- Wednesday to Saturday – 9:30am until late
- Sundays 9:30am until 5pm
- Bookings not required
- Bar menu available.

Restaurant opening hours:

- Tuesdays for shows only (5pm until late)
- Wednesday to Saturday – 11:30am until late
- Sundays 11:30 m to 3pm
- Best to book. **Walk-ins** welcome. Walk-ins are people who visit a place without a booking.



Sensory Guide



Feel

Change in ground surface
(river deck entry)
Heating
Shared personal space



Sounds

Aeroplanes
Coffee machine
Music
People



Sights

Glare



Smells

Food/Drink
Perfumes

TOILETS

Brisbane Powerhouse, Level 1

There is one set of toilets on level 1.

Location: after the main entry doors, on the right.

Includes:

- one all gender, accessible toilet with artificial lighting
- open entry to small foyer area with an 860mm space for you to pass through
- manual door that you push open with an 850mm space for you to pass through
- twist lock at 920mm AFFL
- cubicle space 1960 mm x 2550mm
- grab bars to the left and beside toilet
- toilet height 460mm AFFL with left hand transfer
- sink height 830mm AFFL with lever tap 1050mm AFFL
- emergency buttons 200mm from toilet and beside sink
- baby change area
- separate men/boys and women/girl's toilets.



Sensory Guide



Feel

Shared personal space
(excl accessible)



Sounds

Announcements
Echo | Hand dryer
Music
Toilet flushing
Water running



Sights

Bright lights
Mirror/Reflection



Smells

Air Freshener
Bathroom smells
Disinfectants

OUTDOOR AREA

Level 1

Includes:

- Plaza
- Amphitheatre
- Pleasuredome.



PLAZA AND AMPHITHEATRE

Outdoor Area, **Level 1**

Outdoor events happen in the Plaza and the Amphitheatre.

The Plaza

Location: at main entrance to the left.

The Plaza is an outdoor, open-air event space used for music events, farmers markets and food trucks. Fenced off licensed areas may also be available.

Includes:

- large concrete area
- stage
- various combinations of tables and seating may be used
- dog water fountain
- lighting in the concrete ground and above the main entry doors
- portable toilets in the Plaza may be available for some events.

Amphitheatre

Location: at main entrance to the right.

There is flat and stepped access to the Amphitheatre.

It is an open-air event space.

Includes:

- space for events
- stage.

Children to be supervised at all times.

Remember to bring a hat and sunscreen.

Dogs welcome on lead.

Designated smoking/vaping areas available.



Sensory Guide



Feel

Shared personal space
Weather/Night air
Wind



Sounds

Aeroplanes
Entertainment
Flying insects
Nature
Traffic
Weather



Sights

Birds
Crowd movement
Flying insects
Glare



Smells

Food/Drink
Perfumes

PLEASUREDOME

Outdoor Area, **Level 1**

Location: on grassed area, next to The Plaza.

The Pleasuredome is a tent structure that is available for hire for private events.

There is a wide, open entrance.

Includes:

- timber flooring
- seats with backrests
- stage.



Sensory Guide



Feel

Change in ground surface
Heating/Cooling
Shared personal space
Weather/Night air



Sounds

Aeroplanes
Entertainment
Flying insects
Nature
Traffic
Weather



Sights

Birds
Bright lights
Crowd movement
Flying insects
Glare



Smells

Food/Drink
Perfumes

BRISBANE POWERHOUSE

Level 2

There is lift and stair access to level 2.

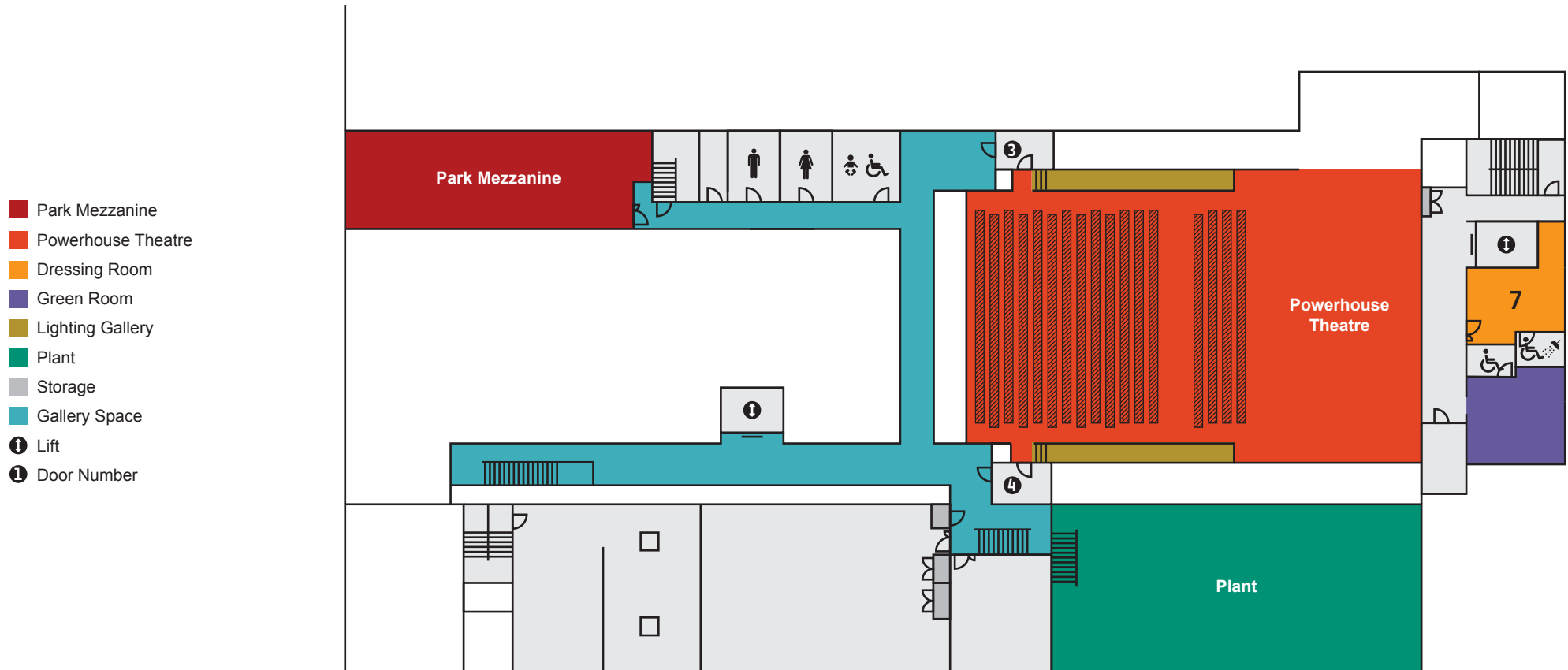
Includes:

- access to Doors 3 and 4 of the Powerhouse Theatre
- Park Mezzanine
- Gallery spaces for viewing events on the Turbine Platform below
- toilets.



BRISBANE POWERHOUSE

LEVEL 2



PARK MEZZANINE

Brisbane Powerhouse, **Level 2**

Entry is through a manual door that you pull out with a 920mm space for you to pass through. This can be opened wider with a 1400mm space for you to pass through.

Park Mezzanine is a small room, overlooking New Farm Park. It is available for hire and is ideal for interval drinks, meetings and training sessions for up to 40 people. Theatre style seating can be arranged.

Includes:

- long conference table
- seats with backrests
- audio visual screen
- white boards
- privacy curtains
- kitchenette with microwave, sink, fridge and instant hot water.



Feel

Change in ground surface
Heating/Cooling
Shared personal space



Sounds

Heating/Cooling



Sights

Bright lights
Digital screens



Smells

Food/Drink
Perfumes

Sensory Guide

GALLERY SPACES

Brisbane Powerhouse, Level 2

There are two gallery spaces that allow standing room for visitors to view free events happening in the Turbine Platform below.

Both gallery spaces are opposite the entrance doors to the Powerhouse theatre.

Includes:

- standing room
- guard rail.



Sensory Guide



Feel

Elevation
Heating/Cooling
Shared personal space



Sounds

Applause
Music
Performance/Narrator
Sound effects



Sights

Special effects smoke
Varied lighting
Visual effects
Vivid entertainment



Smells

Food/Drink
Perfumes
Special effects smoke

TOILETS

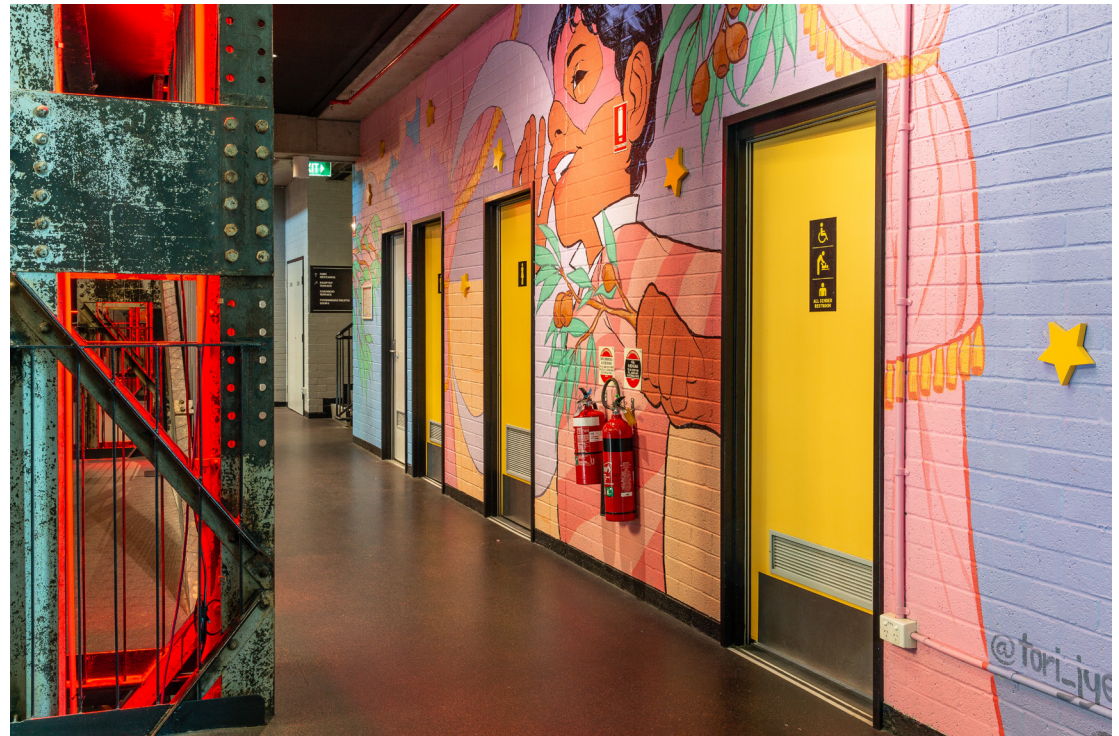
Brisbane Powerhouse, **Level 2**

There is one set of toilets on level 2.

Location: Next to the Park Mezzanine

Includes:

- one all gender, accessible toilet with artificial lighting
- manual door that you push open with an 850mm space for you to pass through
- twist lock at 950mm AFFL
- cubicle space 1820mm x 3550mm
- grab bars to the left and beside toilet
- toilet height 460mm AFFL with left hand transfer
- sink height 790mm AFFL with lever tap 1000mm AFFL
- emergency buttons 200mm from toilet and beside sink
- baby change area
- separate men/boys and women/girls' toilets.



Feel

Shared personal space
(excl accessible)



Sounds

Announcements
Hand dryer
Music
Toilet flushing
Water running



Sights

Bright lights
Mirror/Reflection



Smells

Air Freshener
Bathroom smells
Disinfectants

Sensory Guide

BRISBANE POWERHOUSE

Level 3

There is lift and stair access to level 3.

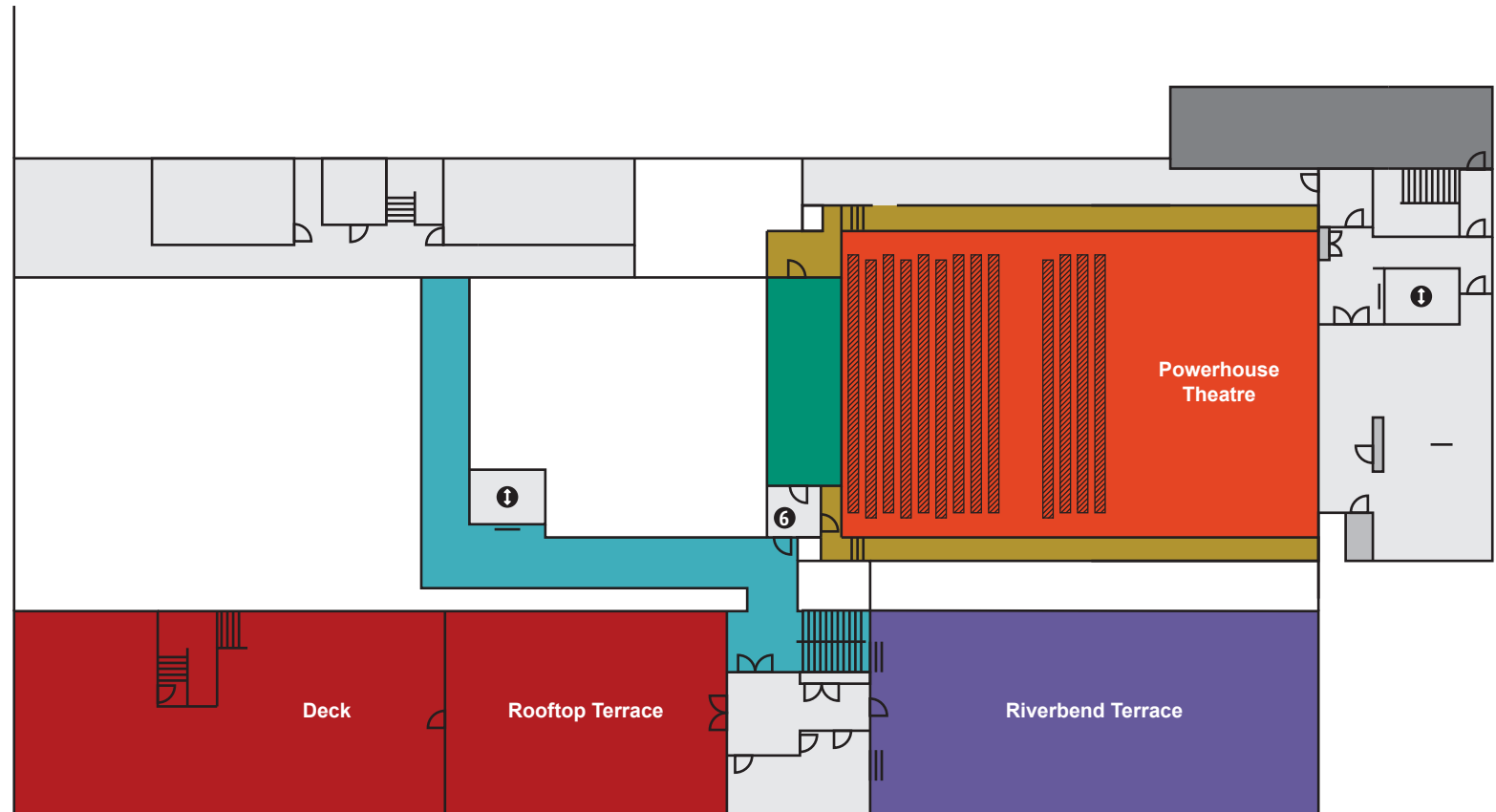
Includes:

- access to Door 6 of the Powerhouse Theatre
- Rooftop Terrace with adjoining deck
- Riverbend Terrace
- Gallery space for viewing performances on the Turbine Platform on level 1.

BRISBANE POWERHOUSE

LEVEL 3

- Rooftop Terrace
- Riverbend Terrace
- Gallery Space
- Powerhouse Theatre
- Lighting Gallery
- Control Room
- Storage
- Staff Only
- ❗ Lift
- ❗ Door Number



ROOFTOP TERRACE

Brisbane Powerhouse, **Level 3**

Entry summary

Access to the Rooftop Terrace is through a lobby.

Lobby

- Manual door. Push to open.
- Width 850mm to 1740mm.

Rooftop Terrace (on the right)

- Manual door. Pull to open.
- Width 780mm to 1340mm.

Deck

- Manual door. Push to open.
- Width 1070mm.



The most convenient toilets are located on level 2.

The Rooftop Terrace has river views and seats 100 people or stands 150. It is available for hire for network events, weddings and other special occasions.

Rooftop Terrace main room includes:

- couches, some with back and armrests
- stools
- coffee tables
- tall and round tables
- adjustable microphone.

The main room leads to an outdoor undercover deck.

The deck includes:

- bar serving counter at 940mm AFFL
- tall tables
- bar stools.



Feel

Change in ground surface
Heating/Cooling
Shared personal space
Weather/Night air (deck)



Sounds

Entertainment
Flying insects (deck)
Heating/Cooling
Weather (deck)



Sights

Dim lights
Glare



Smells

Food/Drink
Perfumes

Sensory Guide

RIVERBEND TERRACE

Brisbane Powerhouse, **Level 3**

Entry summary

Access to the Riverbend Terrace is through a lobby.

Lobby

- Manual door. Push to open.
- Width 850mm to 1740mm.

Riverbend Terrace (on the left)

- Manual door. Push to open.
- Width 1070mm.

The Riverbend Terrace is a large, covered deck with river views. It is available for hire and is perfect for special occasions, networking nights and team building activities.

It seats 40 people or stands 75.

Includes:

- surrounding blinds, allowing for a closed-in or open-air space experience
- timber decking
- bar counter at 1140mm AFFL
- a variety of table and seating.

Both the Riverbend Terrace and Rooftop Terrace can be hired together, giving you private use level 3 of Brisbane Powerhouse.



The most convenient toilets are located on level 2.



Feel

Change in ground surface
Heating
Shared personal space
Weather/Night air (deck)



Sounds

Entertainment
Flying insects (deck)
Heating/Cooling
Weather (deck)



Sights

Constrasting colours
Wall art



Smells

Food/Drink
Perfumes

Sensory Guide

GALLERY SPACE

Brisbane Powerhouse, Level 3

The gallery space allows standing room for visitors to view free events happening in the Turbine Platform below on level 1.

Includes:

- standing room
- guard rail.



Feel

Elevation
Heating/Cooling
Shared personal space



Sounds

Applause
Music
Performance/Narrator
Sound effects



Sights

Special effects smoke
Varied lighting
Visual effects
Vivid entertainment



Smells

Food/Drink
Perfumes
Special effects smoke

Sensory Guide

STORES BUILDING

The Stores Building is a separate building to the Brisbane Powerhouse and it situated on the same site.

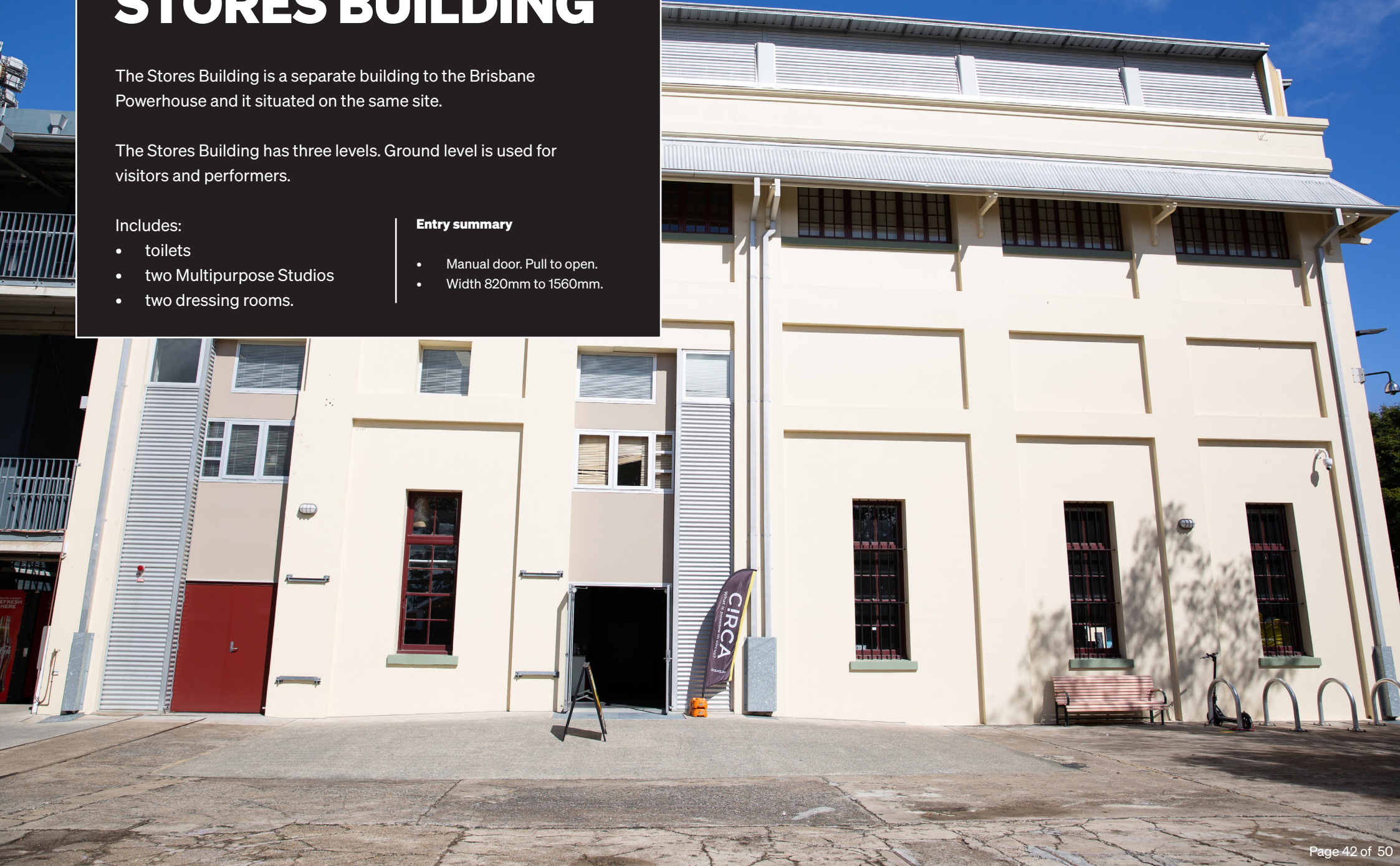
The Stores Building has three levels. Ground level is used for visitors and performers.

Includes:

- toilets
- two Multipurpose Studios
- two dressing rooms.

Entry summary

- Manual door. Pull to open.
- Width 820mm to 1560mm.



TOILETS

Stores Building

There are two toilets on the ground floor of the Stores Building.

Toilet One

Location: After entry and kitchenette, on the left.

Includes:

- one all gender, accessible toilet with artificial lighting
- manual door that you push open with an 850mm space for you to pass through
- twist lock at 900mm AFFL
- cubicle space 1890mm x 2360mm
- grab bars to the left and behind toilet
- toilet height 460mm AFFL with left hand transfer
- sink height 830mm AFFL with lever tap 900mm AFFL
- emergency buttons 300mm from toilet and beside sink.

Toilet Two

Location: After entry and kitchenette, on the right.

Includes:

- one all gender, accessible toilet with artificial lighting
- manual door that you push open with an 850mm space for you to pass through.
- twist lock at 900mm AFFL
- cubicle space 1890mm x 2360mm
- grab bars to the right and behind toilet
- toilet height 460 mm AFFL with right hand transfer
- sink height 830mm AFFL with lever tap 900mm AFFL
- emergency buttons 300mm from toilet and beside sink.



Sensory Guide



Feel

Change in ground surface



Sounds

Hand dryer
Toilet flushing
Water running



Sights

Bright lights
Mirror/Reflection



Smells

Air Freshener
Bathroom smells
Disinfectants

MULTIPURPOSE STUDIOS

Stores Building

Entry summary

Multipurpose Studio One

- Manual door. Pull to open.
- Width 830 to 1180mm.

Multipurpose Studio Two

- Manual door. Pull to open.
- Width 830mm to 1180mm

There are two Multipurpose Studios on the ground floor of the Stores Building.

Multipurpose Studio One

Location: After entrance on the right.

Multipurpose Studio Two

Location: Straight ahead of entrance.

The Multipurpose Studio are used as rehearsal spaces for performers and for a variety of events, including markets.



Sensory Guide



Feel

Change in ground surface
Heating/Cooling
Shared personal space



Sounds

Heating/Cooling



Sights

Dim lighting



Smells

Food/Drink
Perfumes

DRESSING ROOMS

Stores Building

Entry summary

- Manual door. Push to open.
- Width 850mm

There are two dressing rooms.

Location:

1. Enter the Stores Building and turn left.
2. Go past the kitchenette.
3. Dressing rooms 1 and 2 are on the right.

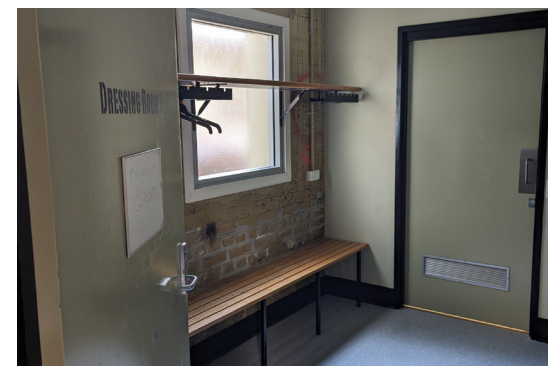
Each dressing room includes:

- mirrors with lighting
- benches
- seats with backrests.

Both dressing rooms have a toilet which includes:

- one all gender, accessible toilet with artificial lighting
- manual door that you push open with an 850mm space for you to pass through.
- twist lock at 900mm AFFL
- cubicle space 1940mm x 2700mm

- grab bars to the left and behind - dressing room 1
- grab bars to the right and behind toilet - dressing room 2
- toilet height 430mm AFFL with right hand transfer
- sink height 790mm AFFL with lever tap 900mm AFFL
- shower with HSHS, grab bars, shower bench and shower curtain
- emergency buttons 300mm beside sink and shower.



Feel

Shared personal space



Sounds

Toilet flushing
Water running



Sights

Bright lights
Mirror/Reflection



Smells

Air Freshener
Bathroom smells
Deodorants
Disinfectants
Food/Drink
Makeup

Sensory Guide

ACCESSIBILITY

Throughout

- Online bookings.
- Brisbane Powerhouse carpark entry ticket machine: paper ticket issued. Payment can be made at pay station near lift or at exit gates. Remove sunglasses to see screen instructions.
- Pay station at Brisbane Powerhouse carpark operating height 1220mm AFFL. Credit card only.
- Clear path of travel from outdoor to indoor areas.
- External terrain of concrete and timber decking.
- Vending machine near Brisbane Powerhouse carpark lift.
- Varied internal terrain of concrete, carpet, tiles and laminate.
- Wayfinding signage throughout.
- Wide, clear internal and external walkways.
- Clear wheelchair circulation space.
- Spaces for a person using a wheelchair to sit with friends.
- Discounted entry prices for holders of Companion cards.
- Storage available for mobility aids. See Welcome desk.
- Accessible guided tours available.
- Wheelchair available for hire. Please see welcome desk.
- Hearing Loops available in Underground Theatre and Powerhouse Theatre. Please notify the Box Office at the time of booking if you require a Hearing Loop. Our Hearing Loop has an earpiece that sits over the ear and may be used without a hearing aid. Our Hearing Loops can be integrated with some models of hearing aids.
- **Auslan** performances may be offered through the [“Flex” program](#) and [Auslan Stage Left](#). Auslan is Australian sign language for people who have difficulty hearing.

- Disposable ear plugs on request.
- Some performances offer audio descriptions. For further details please contact Brisbane Powerhouse.
- Audio guides for some exhibits and displays. For further details please contact Brisbane Powerhouse.
- Pen and paper for exchanging information.
- Staff available to read information to visitors.
- Assistance animals welcome.
- Relaxed performances are sometimes available. Please contact our Box Office on 07 3358 8600.
- Quiet rooms may be available on request. Please see welcome desk.
- Brisbane Powerhouse is guided by a First Nations Advisory Committee.
- Brisbane Powerhouse is guided by an LGBTQIA+ Reference Group.
- Staff very accommodating to people of all abilities

Lift from Accessible Parking Bays (Brisbane Powerhouse Carpark) to Plaza Area

- Buttons outside lift operating height 1030mm AFFL.
- Door clearance 1100mm.
- Able to play sound.
- Cubicle space 2195mm X 1690mm.
- Buttons inside lift operating height 1100mm AFFL.
- Buttons inside lift with Braille. Braille is written language for people with vision difficulties. Raised dots represent characters and are felt with a person's fingertips.
- Handrails.
- Lift exit with ramp: length 5 metres with gradient 1:14 (7.1 %).

Brisbane Powerhouse Internal Lift (Ground Floor to Level 3)

- Buttons outside lift operating height 1000mm AFFL.
- Door clearance 1080mm
- Able to play sound
- Cubicle space 1735mm X 2165mm.
- Buttons inside lift operating height 1160mm AFFL.
- Buttons inside lift with Braille
- Handrail.

Brisbane Powerhouse Ground Level

- River deck boardwalk to Pleasuredome 65 metres in length with gradient 1:22 (4.46%)
- Entry foyer water station operating height 1270mm AFFL.
- Underground Theatre entry doors with card scanner 1120mm AFFL.
- Mary Mae's Restaurant and Bar with rectangle, square and terrace tables at 750mm AFFL with knee clearance 710mm AFFL.

Brisbane Powerhouse Level 1

- Pathway from New Farm Park Ring Road to main entrance includes a 100m ramp with gradient 1:14 (7.06%)
- Pathway from river bank to level 1 (alongside exterior of Mary Mae's Restaurant and Bar) length 50 metres with gradient 1:20 (4.93%). Intermittent landing platforms.
- Main entry doors with exit push button 990mm AFFL.

ACCESSIBILITY

- Secondary entry doors with exit push button 1000mm AFFL.
- Welcome desk lower height 1210mm AFFL. Upper height 1280mm AFFL.
- Pram parking past the toilets, to the side of hallway.
- Powerhouse Theatre flat entry to stage.
- Turbine Platform access ramp one: length 15 metres with gradient 1:14 (7%). Followed by landing platform.
- Access ramp two: length 11 metres with gradient 1:14 (7%).
- Graffiti Room conference table height 760mm AFFL with knee clearance 745mm AFFL.
- Bar Alto rectangle tables height 735mm AFFL with knee clearance 690mm AFFL.
- Bar Alto 4m ramp to upper section of dining area with gradient 1:8 (12.9%). Landing platform middle of ramp.
- Plaza area with dog water fountain operating height 840mm AFFL
- Plaza area stage 550mm AFFL.
- Amphitheatre stage 560mm AFFL.
- Pleasuredome with pram ramp from Plaza to grass area with length 2850mm and gradient 1:9 (11%).
- Pleasuredome with timber ramp from grass area to entry with length 4400mm and gradient 1:20 (4.9%).
- Pleasuredome timber ramp from grass area to entry partly undercover.
- Pleasuredome with stage 940mm AFFL.

Brisbane Powerhouse Level 2

- Park Mezzanine conference table height 760mm AFFL with knee clearance 740mm AFFL.
- Kitchenette bench height 860mm AFFL.

Brisbane Powerhouse Level 3

- Rooftop Terrace round tables 710mm AFFL with knee clearance 685mm AFFL.
- Lectern 1050mm AFFL.

Stores Building

- Kitchenette with fridge, instant hot water, and microwave. Bench height 860mm AFFL with knee clearance 815mm AFFL.
- Ramp to dressing rooms with length 2830mm and gradient 1:14 (6.8%).



Throughout

- Pathway from New Farm Park Ring Road to main entry doors includes ramp with intermittent TGSI.
- Patrolled pathways and nearby car parks for some events.
- No smoking indoors. Allocated smoking areas outside.
- Wet floor signage may be displayed.
- Evacuation maps located throughout.
- Fire wardens on site.
- First aid kit at welcome desk, staff offices, kitchens and dock office.
- Defibrillator next to Powerhouse Theatre Door One on level 1, near Production Office on level 3 and in Stores building on wall next to dressing rooms.
- Children to be actively supervised at all times.
- Walking only.
- Illuminated exit signs.
- Audible alerts in the case of an emergency.
- In the event of an emergency, staff will help and direct visitors. If there is to be an evacuation, visitors will be directed to the nearest exit and designated assembly area.

Lift from Accessible Parking Bays (Brisbane Powerhouse Carpark) to Plaza Area

- Ramp from lift exit with TGSI top and bottom with no colour contrast. Handrails each side.

Stairs from Accessible Parking Bays (Brisbane Powerhouse Carpark) to Plaza Area

- TGSI top and bottom.
- Handrails each side.
- Stair nosing.

Brisbane Powerhouse Ground Level

- *Mary Mae's Restaurant and Bar:*
- Outdoor terrace guardrail 1060mm AFFL.
- Lighting above entry doors and fairy lights around the deck.
- Entrance doors and surrounding panels with contrast safety bands 980 to 1050mm AFFL.
- Pathway alongside exterior of Mary Mae's Restaurant and Bar from river bank to level 1 with TGSI at bottom. No TGSI at top.
- *Underground Theatre:*
- Foyer entry doors with contrast safety bands 1240mm to 1430mm AFFL
- Steps leading down to Row AA with stair nosing, limited down lighting, no TGSI top or bottom, no handrails. No safety barrier.
- Steps from Row A to Row D with LED strips and down lighting.
- Steps from Row A to Row D with stair nosing, no TGSI top or bottom and no handrails.
- Manual emergency exit door one that you push open with an 840mm clearance for you to pass through.
- Manual emergency exit door two that you push open with a 900mm clearance for you to pass through.
- *External Stairs from ground to level 1:*
- TGSI top and bottom.
- Handrails each side.
- Stair nosing.
- Internal Stairs from ground to level 1:
- TGSI bottom, no TGSI top.
- Handrails both sides.
- Stair nosing.
- External lighting, no stair nose lighting.

Brisbane Powerhouse Level 1

- Steps from ground level river deck boardwalk to level 1 Plaza area with TGSI top and bottom, centre handrail, stair nosing and no colour contrast.
- Main entrance doors with contrast safety bands 970mm to 1030 mm AFFL.
- Secondary entrance doors with contrast safety bands 1170mm to 1370mm AFFL.
- *Internal Stairs from level 1 to level 3 - Set One:*
- Location - opposite Turbine Platform
- No TGSI.
- Single handrail.
- Stair nosing.
- Lighting on roof above stairs.
- *Internal Stairs from level 1 to level 3 - Set Two:*
- Location - after the welcome desk.
- Intermittent TGSI
- No TGSI level 2.
- Handrails both sides.
- Stair nosing.
- Internal stairwell lighting, no stair nose lighting.
- *Powerhouse Theatre:*
- Stairs on upper and lower galleries and balcony level with stair nosing, uplighting, no TGSI and no handrails.
- Manual emergency exit door one that you push open with an 860mm clearance for you to pass through. This opens to double doors with a 1700mm clearance for you to pass through.
- Manual emergency exit door two that you push open with an 870mm clearance for you to pass through. This can be opened to double doors with a 1660mm clearance for you to pass through.

SAFETY

- *Turbine Platform:*
- Access ramp with TGSi top and bottom and handrails each side.
- Stairs with no TGSi top or bottom, handrails each side and stair nosing.
- Steel pillars next to Turbine Platform, not colour contrasted.
- *Bar Alto:*
- Ramp to upper level of dining area with TGSi top and bottom and handrails each side.
- Outdoor terrace guardrail 1060mm AFFL.
- Outdoor Performance/Event Areas:
- Plaza area with lighting in concrete and above entry doors
- Steps to Amphitheatre with TGSi top and bottom, no stair nosing, no handrails and not colour contrasted.
- *Pleasuredome:*
- Grassed area with scattered plantar boxes.
- Timber ramp from grass area to entry with no TGSi.
- Stairs from river bank boardwalk with handrails, stair nosing and no TGSi top or bottom.
- Stairs to stage with double handrail, stair nosing and no TGSi top or bottom.

Brisbane Powerhouse Level 2 and 3

- Gallery space guard rails at 1190mm AFFL.

Brisbane Powerhouse Level 3

- Rooftop Terrace and Riverbend Terrace deck guardrail 1220mm AFFL.

Stores Building

- Entry doors with no contrast safety bands.
- Ramp to dressing rooms with TGSi top and bottom. No handrails.





CONTACT

119 Lamington Street
New Farm Queensland 4005
Phone 07 3358 8600
<https://brisbanepowerhouse.org/>
info@brisbanepowerhouse.org

BRISBANE POWERHOUSE

